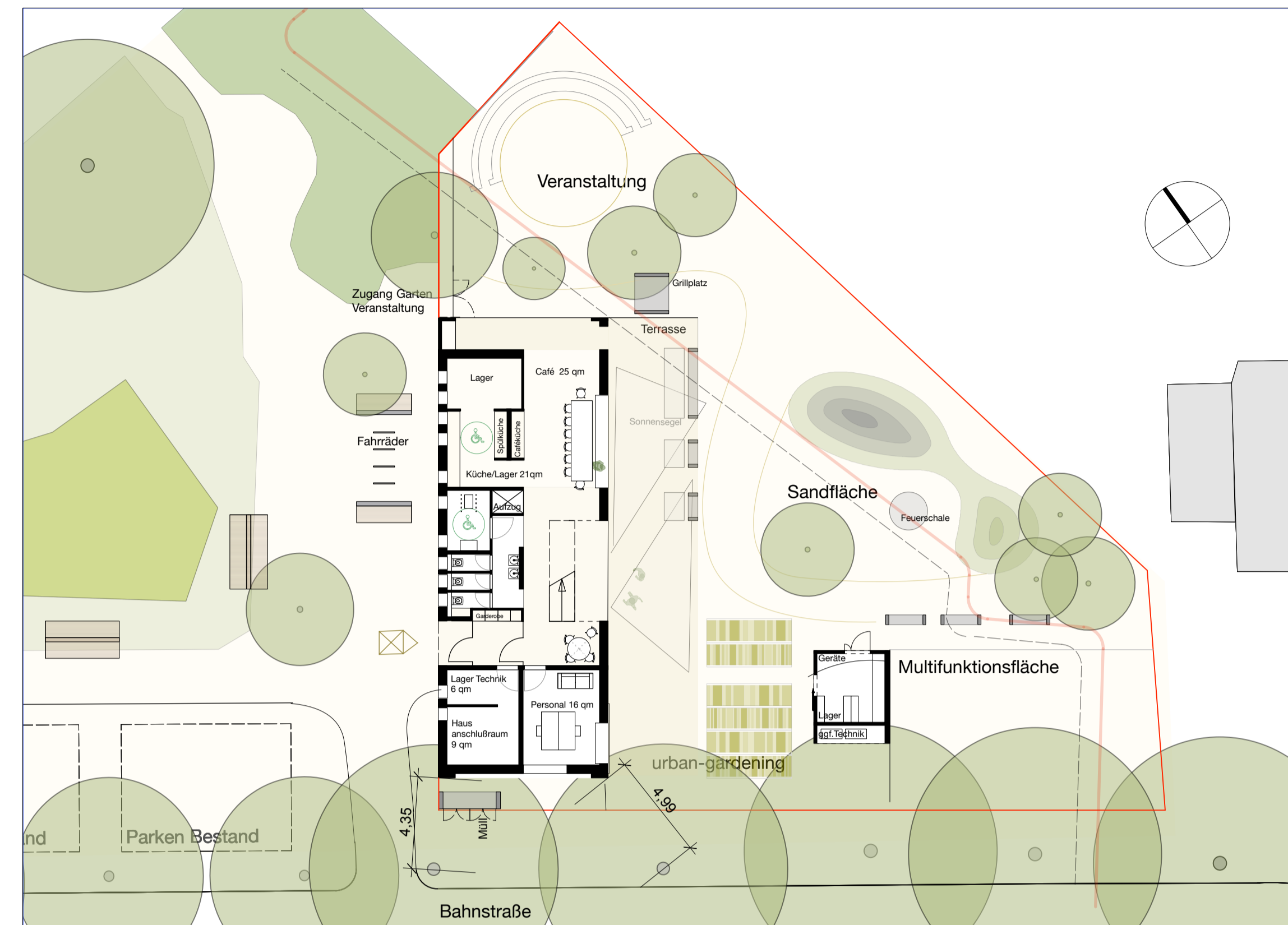


Jugendhaus Alt-Hamborn

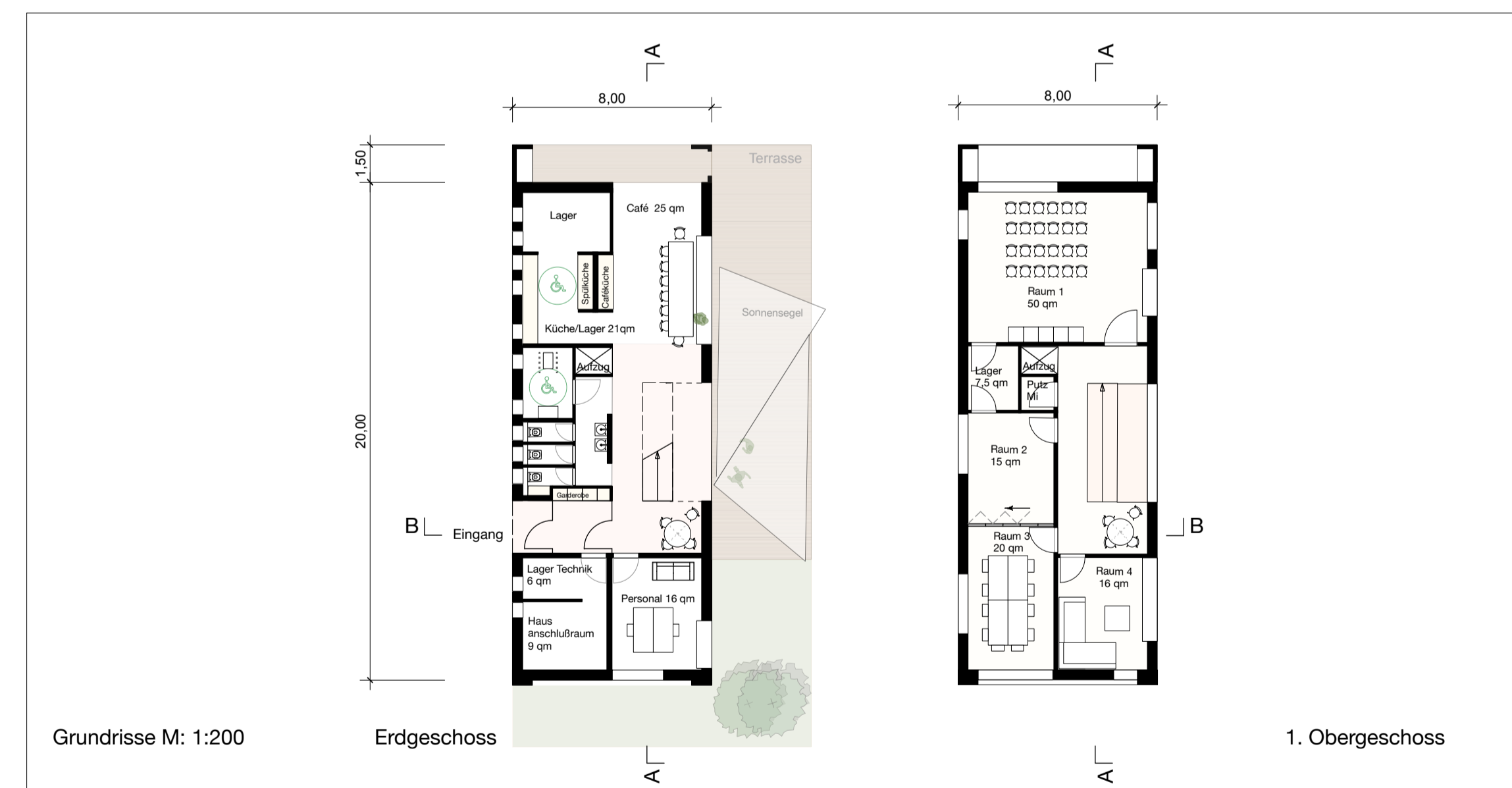


Ansichten M: 1:200



Ansicht Süd-Ost (Garten)

Ansicht Nord-Ost (Café)

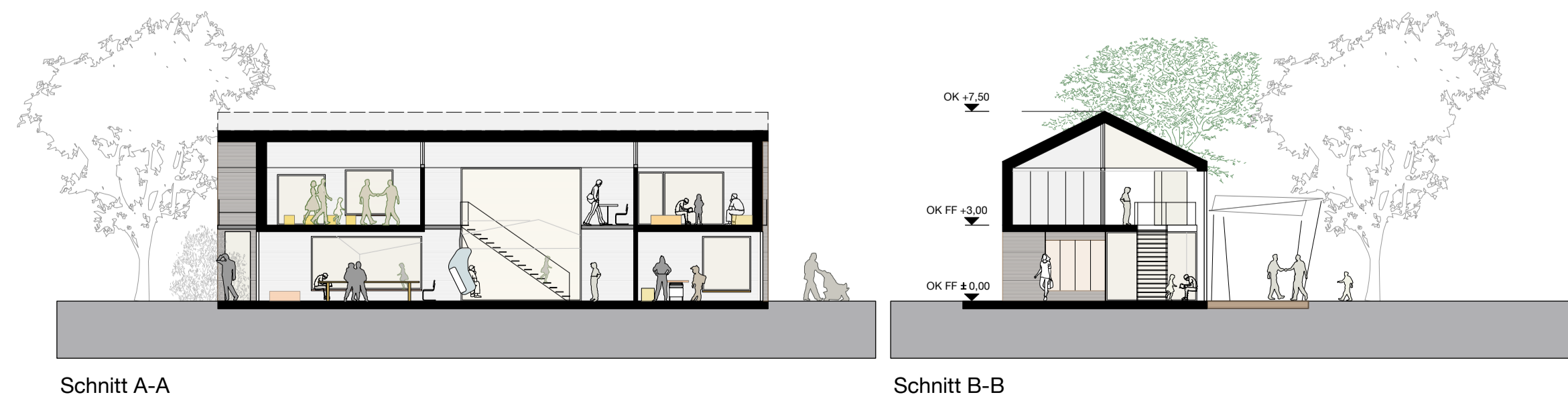


Grundrisse M: 1:200

Erdgeschoss

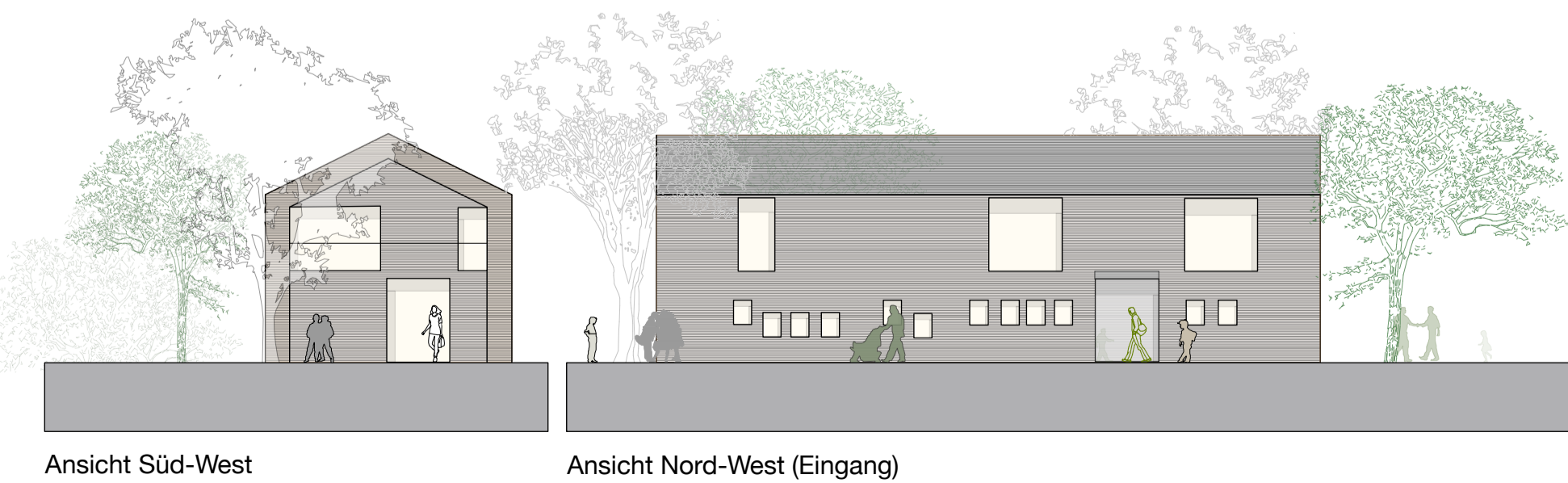
1. Obergeschoss

Schnitte M: 1:200



Schnitt A-A

Schnitt B-B



Ansicht Süd-West

Ansicht Nord-West (Eingang)